

DRAGONFISH

PRECISION UNDERWATER
LASER MEASUREMENT



The DragonFish is a highly compact and rugged underwater laser measurement and profiling system with topside video and software analysis. The system brings benefit to aquaculture applications by enabling accurate, rapid and simple inspection and monitoring of critical features on underwater structures. Example applications are: the width and depth of load-bearing members and anchors, the radius, diameter and circumference of cables, mooring chains, pad-eyes and other critical mooring equipment.

Within typical range to target, the DragonFish generates results with an accuracy of up to 0.5mm, providing the capability to identify and monitor potential damage or deterioration over time due to factors such as excessive loading, corrosion or impact. The package is very compact and has been designed to integrate to the smallest of ROV systems or for diver use using the attachable handle.

The system is supplied with offshore proven operating software for target measurements and analysis which makes it ideal for use in the aquaculture industry where the conditions can be harsh. It generates results in real-time so does not require costly data post processing and does not

require input from survey. DragonFish is easy to operate with remote training completed in less than one hour, typically the system does not require an offshore technician.

Market

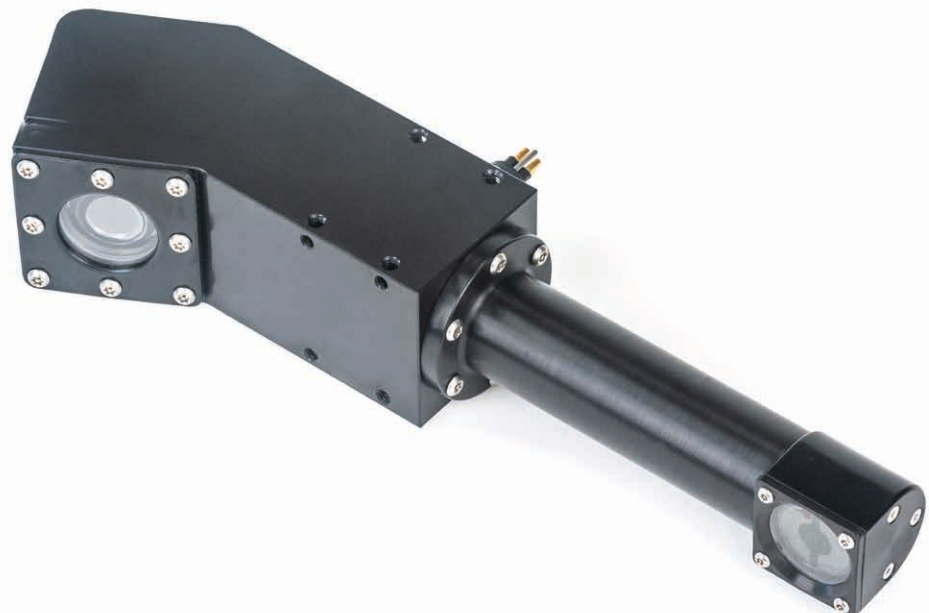
Offshore Energy, Underwater Archaeology, Oceanographic Research, Nuclear Energy, Aquaculture

Applications

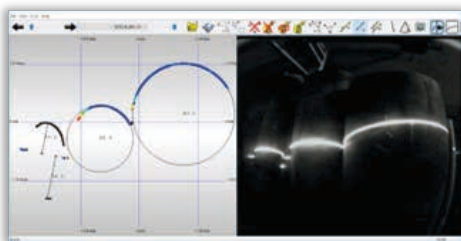
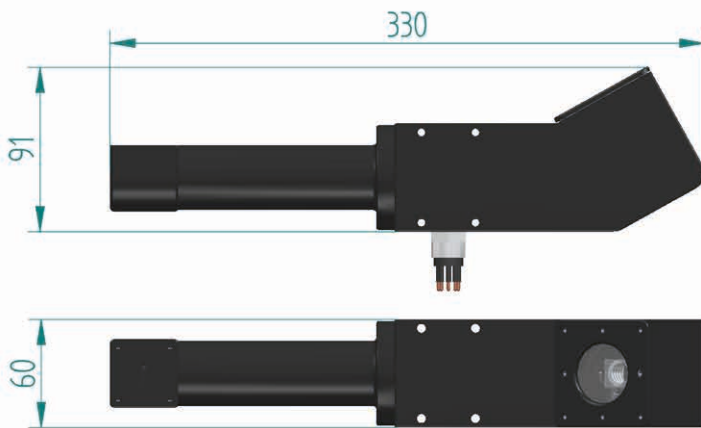
- Any underwater task where highly accurate measurement and profiling is required
- Provides sub millimetric point to point measurements and profiling of shapes, enabling diameter, circumference, radius, angle, distance.
- Ideal for pipelines, mooring chains and weld seams. Cracks, gaps, pitting, depletion, integrity, impact.

Notes

- Harsh environment proven, reliable, compact and easy to use
- Enables measurement up to 0.5mm accuracy
- Does not require INS / positioning input from Survey
- No offshore technician or data related post processing costs



Model	DragonFish MK I	DragonFish DH	DragonFish MK II
Range	100-1500mm		
Accuracy	Up to 0.5mm		
Resolution	Up to 0.3mm		
Laser colour	Blue (450nm) or Green (532nm) or Red (670nm)		
Laser power	70mW		
Fan angle	45°		
Depth rating *	3000m	300mm	3000mm
Weight	In air: 0.5kg / In water: 0.3kg	In air: 1.1kg / In water: 0.5kg	In air: 1.7kg / In water: 1.1kg
Power	250mA@24DC		
Comms	SD Video Card		
Connector	MCBH4M and MCBh2M	MCBH4M	MCBH4M
Material	Anodised aluminium and stainless steel	Anodised aluminium and Acetal	Anodised aluminium
Topside	Software GUI, laptop		



OTAQ Aquaculture Ltd
 Crombie Lodge
 Aberdeen Innovation Park
 Campus Two
 Aberdeen, AB22 8GU, UK

+44 (0)1224 673301
 info@otaq.com